

# Southampton to London Pipeline Project

## Volume 6

Environmental Statement (Volume C)  
Chapter 3: Figures

Application Document: 6.3

Planning Inspectorate Reference Number: EN070005

APFP Regulation No. 5(2)(a)

Revision No. 1.0

May 2019



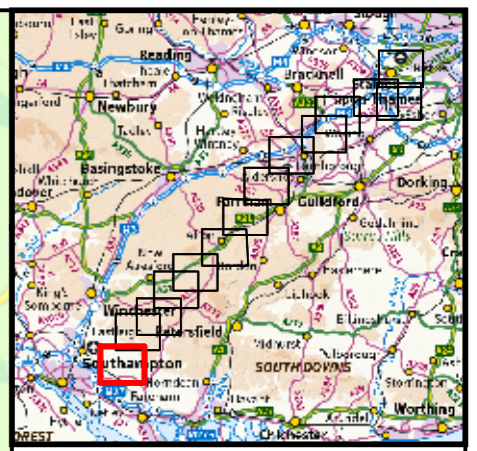
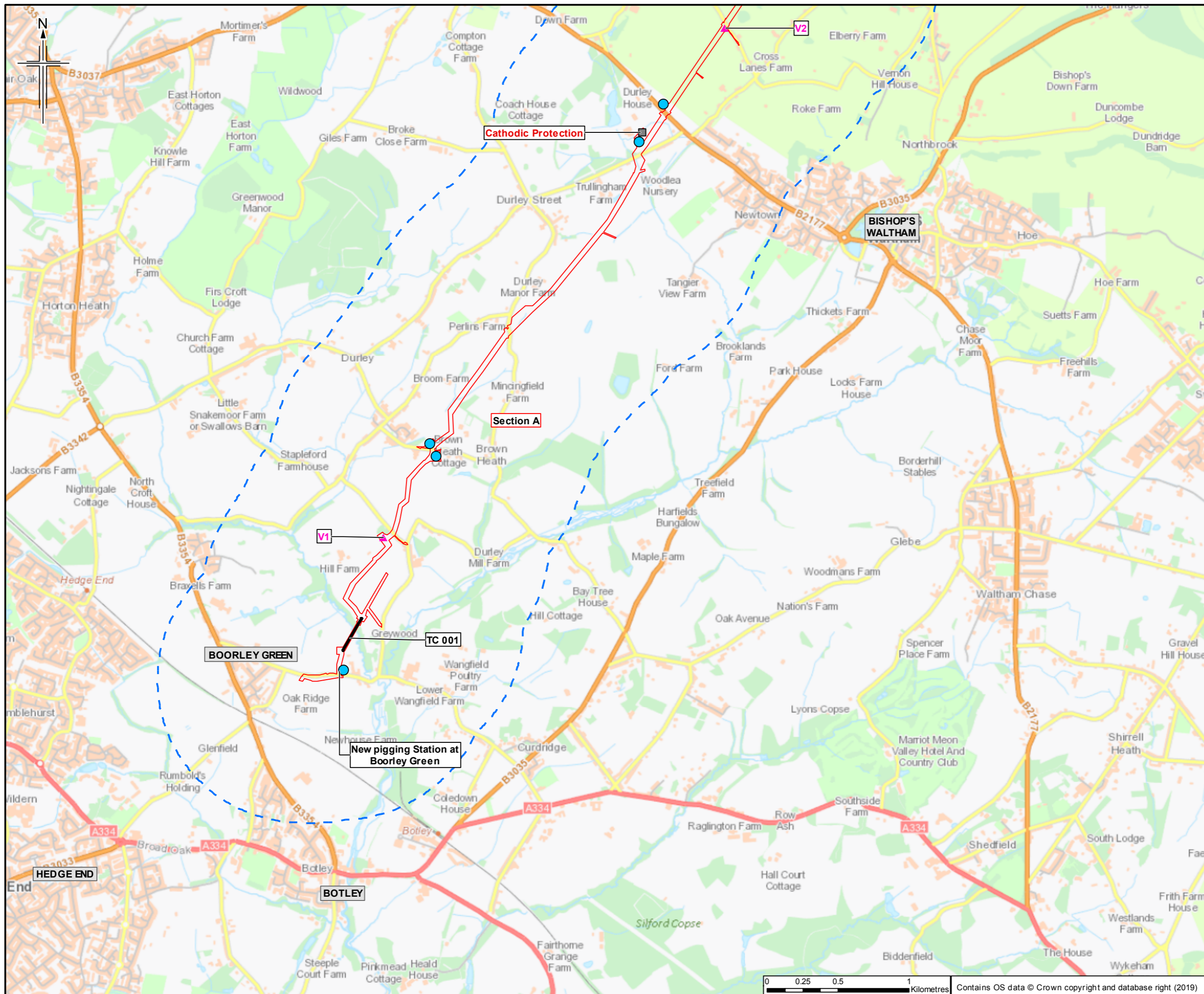
(This page is intentionally left blank)



**Contents**

Figure 3.1: Layout of Scheme (14 Sheets)





- Legend**
- Order Limits
  - Order Limits 1km buffer
  - Section break
  - Section break
  - Logistic hub
  - Construction compound
  - ▲ Valves V14
  - Trenchless crossing TC 008
  - Cathodic Protection

Sheet displays part of Section A

Rev.	Rev. Date	Purpose of revision	OrigDwn	Checked	Rev'd	Apprv'd
0	2019/01/15	For Issue	HM	NS	NS	SH



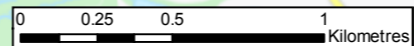
Client  
Esso Petroleum Company, Limited  
Ermyn House,  
Ermyn Way,  
Leatherhead,  
Surrey,  
KT22 8UX



Drawing title  
**ENVIRONMENTAL STATEMENT  
LAYOUT OF SCHEME  
APFP Reg. (2009) 5(2)(o)**

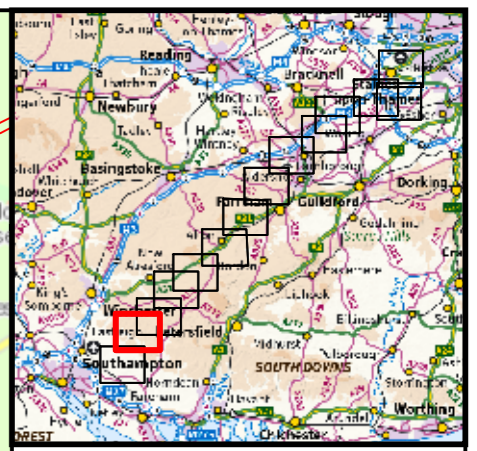
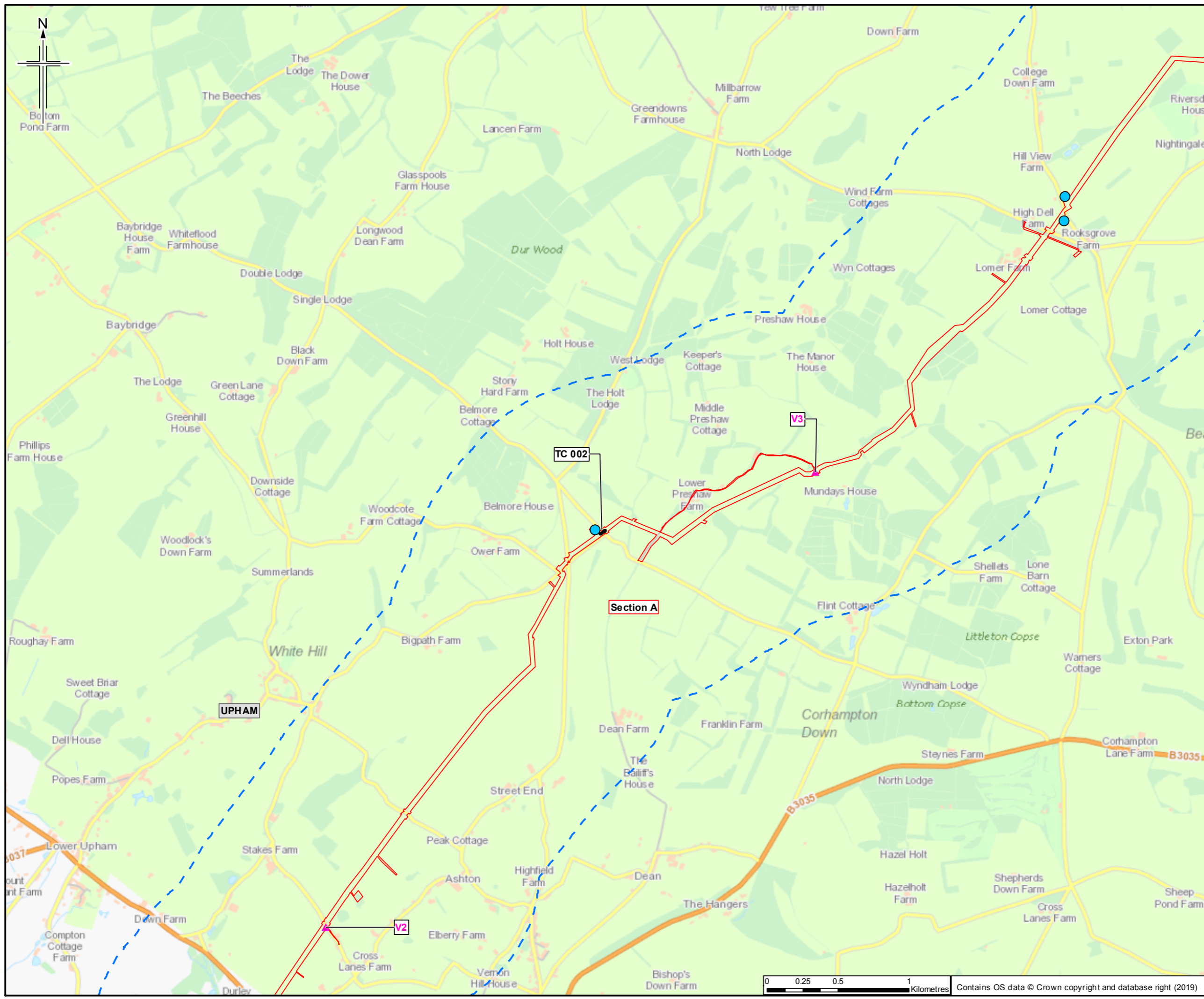
Drawing Status	For Issue
Scale	1:25,000 @ A3 DO NOT SCALE
Jacobs No.	B2325300
Project/Draw No.	B2325300-JAC-000-ENV-DRG-001002
Drawing number	Figure 3.1 Sheet 1 of 14
Rev	0

This drawing is not to be used in whole or part other than for the intended purpose and project as defined on this drawing. Refer to the contract for full terms and conditions.



Contains OS data © Crown copyright and database right (2019)





- Legend**
- Order Limits
  - Order Limits 1km buffer
  - Section break
  - Section break
  - Logistic hub
  - Construction compound
  - ▲ Valves V14
  - Trenchless crossing TC 008
  - Cathodic Protection

Sheet displays part of Section A

Rev.	Rev. Date	Purpose of revision	Orig/Dwn	Checked	Rev'd	Apprv'd
0	20/05/2019	For Issue	HM	NS	NS	SH



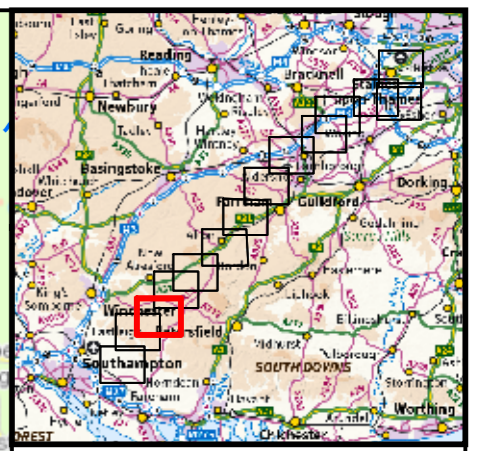
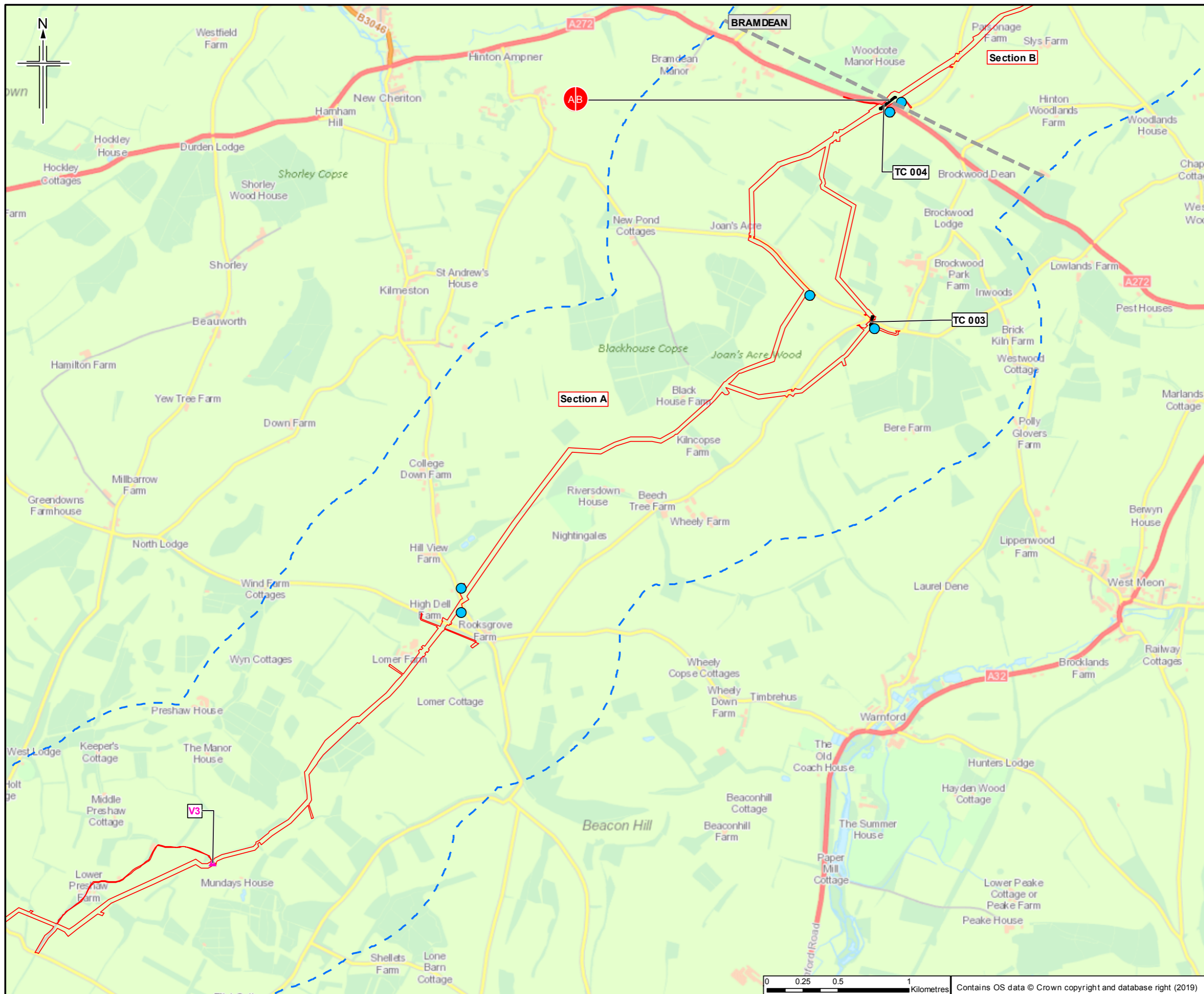
Client  
Esso Petroleum Company, Limited  
Ermyn House,  
Ermyn Way,  
Leatherhead,  
Surrey,  
KT22 8UX



Drawing title  
**ENVIRONMENTAL STATEMENT  
LAYOUT OF SCHEME  
APFP Reg. (2009) 5(2)(o)**

Drawing Status	For Issue
Scale	1:25,000 @ A3 DO NOT SCALE
Jacobs No.	B2325300
ProjectWise No.	B2325300-JAC-000-ENV-DRG-001002
Drawing number	Figure 3.1 Sheet 2 of 14
Rev	0





- Legend**
- Order Limits
  - Order Limits 1km buffer
  - Section break
  - Section break
  - Logistic hub
  - Construction compound
  - ▲ Valves V14
  - Trenchless crossing TC 008
  - Cathodic Protection

Sheet displays parts of Section A and Section B

Rev.	Rev. Date	Purpose of revision	OrigDwn	Checked	Rev'd	Apprv'd
0	20/05/2019	For Issue	HM	NS	NS	SH

**JACOBS**  
1100 Epsom Road, Wokingham, Wokingham RG40 3BU, UK  
 Tel: +44 (0)118 945 7000 Fax: +44(0)118 945 7001  
 www.jacobs.com

**Client**  
 Esso Petroleum Company, Limited  
 Ermyn House,  
 Ermyn Way,  
 Leatherhead,  
 Surrey,  
 KT22 8UX

**Project**

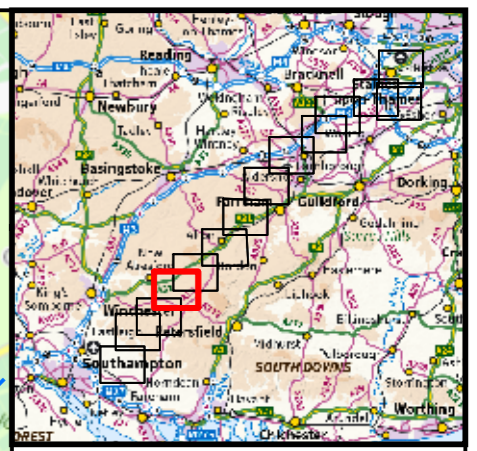
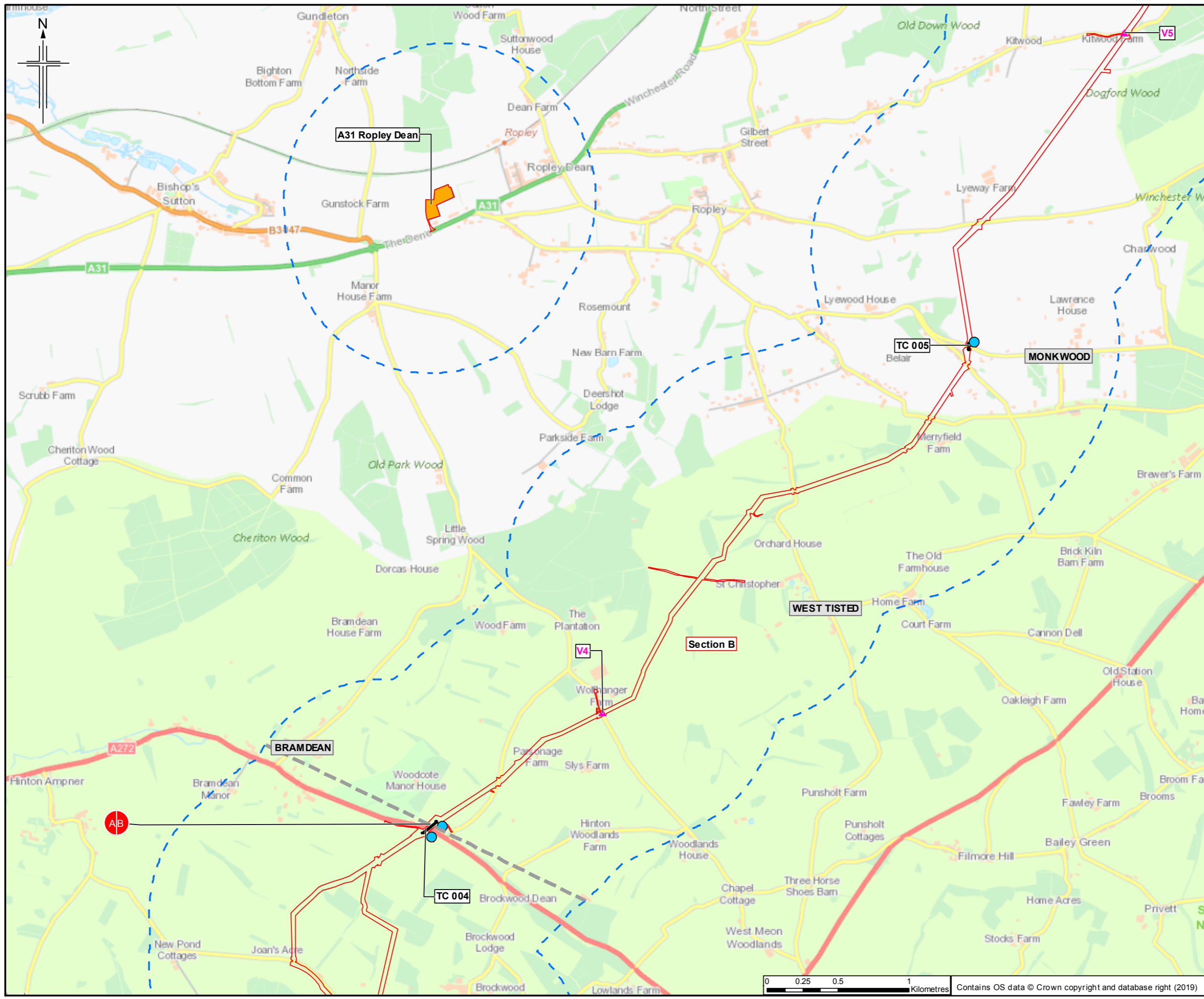
Southampton to London Pipeline Project

**Drawing title**

ENVIRONMENTAL STATEMENT  
 LAYOUT OF SCHEME  
 APFP Reg. (2009) 5(2)(o)

Drawing Status	For Issue
Scale	1:25,000 @ A3 DO NOT SCALE
Jacobs No.	B2325300
ProjectWise No.	B2325300-JAC-000-ENV-DRG-001002
Drawing number	Figure 3.1 Sheet 3 of 14
Rev	0





- Legend**
- Order Limits
  - Order Limits 1km buffer
  - Section break
  - Section break
  - Logistic hub
  - Construction compound
  - ▲ Valves V14
  - Trenchless crossing TC 008
  - Cathodic Protection

Sheet displays parts of Section A and Section B

Rev.	Rev. Date	Purpose of revision	Orig'Dwn	Checked	Rev'd	Apprv'd
0	20/05/2019	For Issue	HM	NS	NS	SH



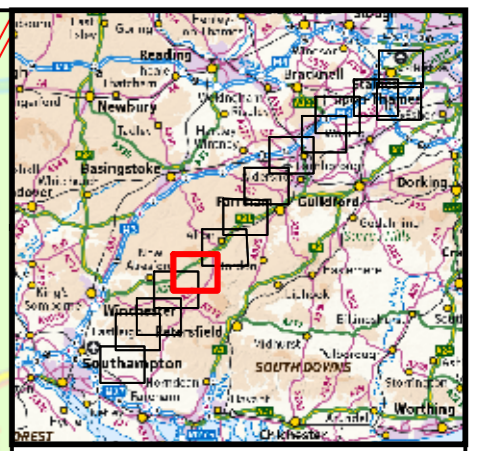
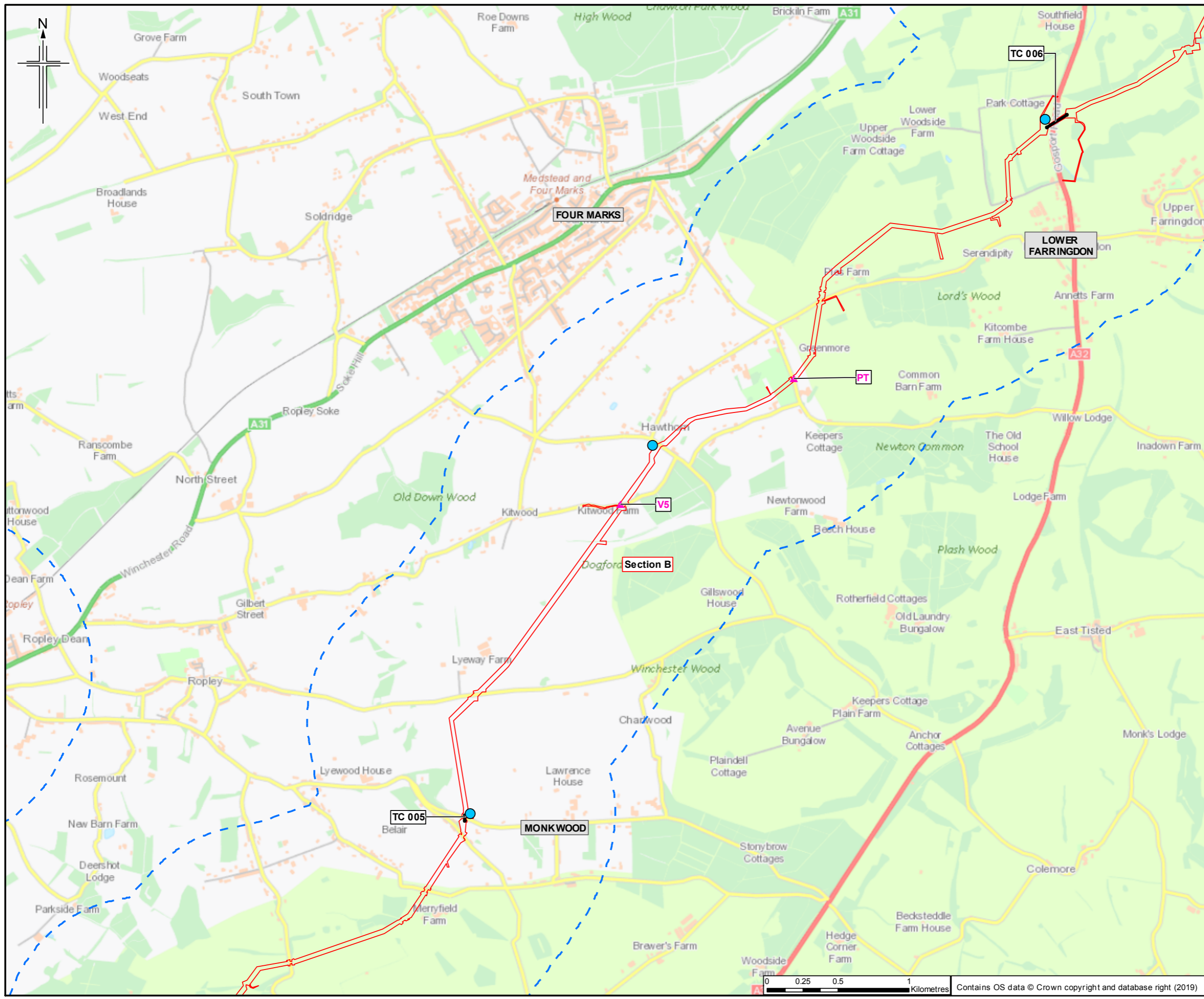
Client  
Esso Petroleum Company, Limited  
Ermyn House,  
Ermyn Way,  
Leatherhead,  
Surrey,  
KT22 8UX



Drawing title  
**ENVIRONMENTAL STATEMENT  
LAYOUT OF SCHEME  
APFP Reg. (2009) 5(2)(o)**

Drawing Status	For Issue
Scale	1:25,000 @ A3 DO NOT SCALE
Jacobs No.	B2325300
Project/Work No.	B2325300-JAC-000-ENV-DRG-001002
Drawing number	Figure 3.1 Sheet 4 of 14
Rev	0





- Legend**
- Order Limits
  - Order Limits 1km buffer
  - Section break
  - Section break
  - Logistic hub
  - Construction compound
  - ▲ Valves V14
  - Trenchless crossing TC 008
  - Cathodic Protection

Sheet displays a part of Section B

Rev.	Rev. Date	Purpose of revision	OrigDwn	Checked	Rev'd	Apprv'd
0	20/05/2019	For Issue	HM	NS	NS	SH



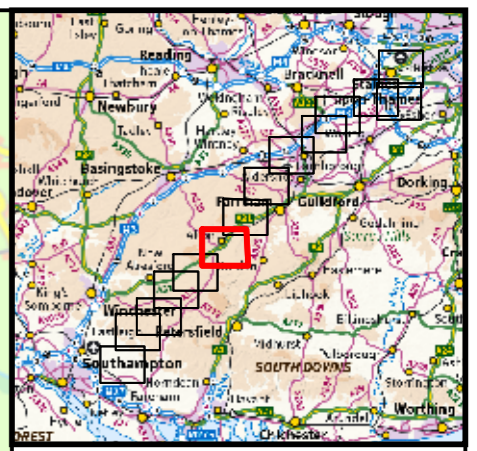
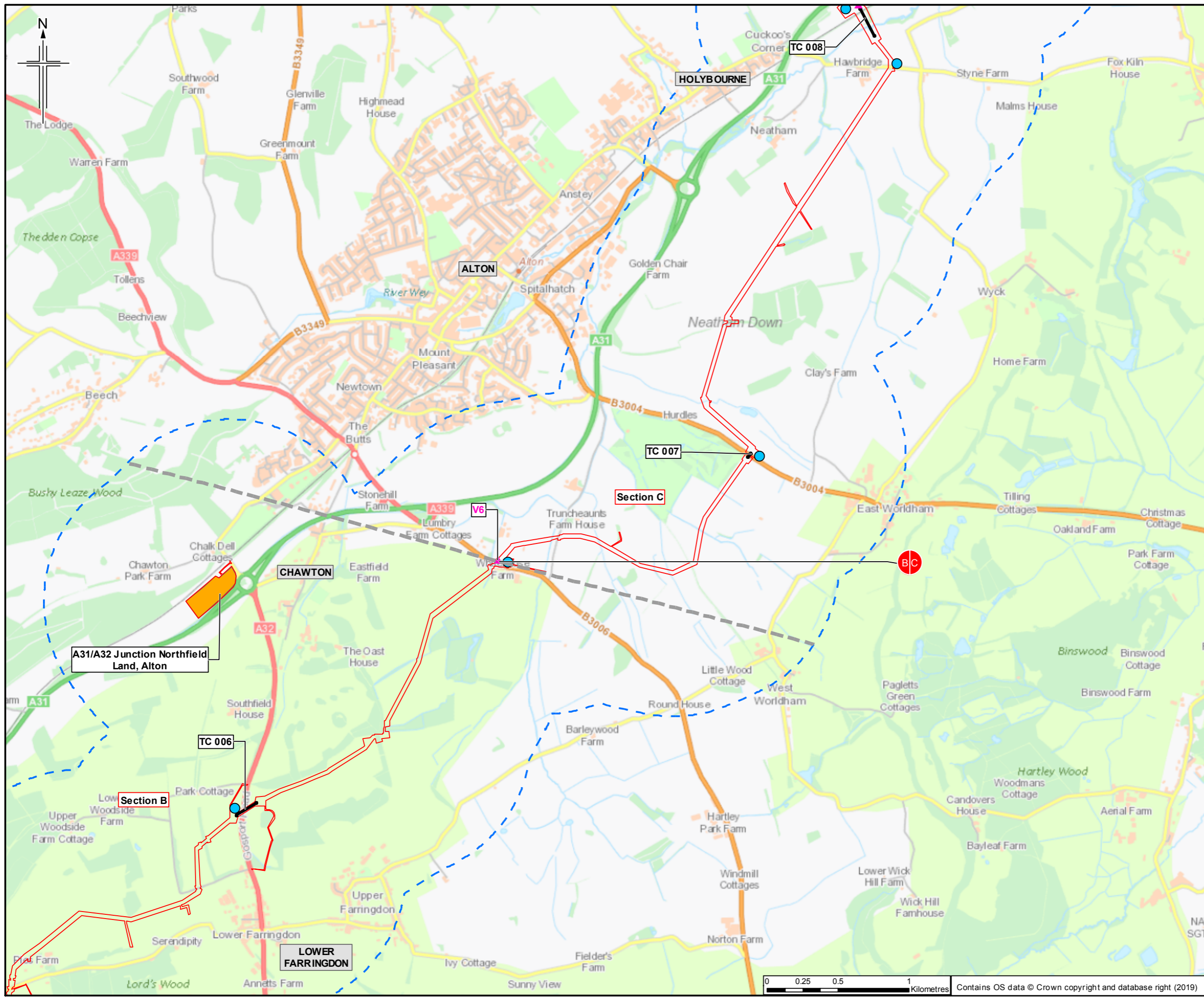
Client  
Esso Petroleum Company, Limited  
Ermyn House,  
Ermyn Way,  
Leatherhead,  
Surrey,  
KT22 8UX



Drawing title  
**ENVIRONMENTAL STATEMENT  
LAYOUT OF SCHEME  
APFP Reg. (2009) 5(2)(o)**

Drawing Status	For Issue
Scale	1:25,000 @ A3 DO NOT SCALE
JACOBS No.	B2325300
ProjectWise No.	B2325300-JAC-000-ENV-DRG-001002
Drawing number	Figure 3.1 Sheet 5 of 14
Rev	0





- Legend**
- Order Limits
  - Order Limits 1km buffer
  - Section break
  - Section break
  - Logistic hub
  - Construction compound
  - ▲ Valves V14
  - Trenchless crossing TC 008
  - Cathodic Protection

Sheet displays parts of Section B and Section C

Rev.	Rev. Date	Purpose of revision	Orig/Dwn	Checked	Rev'd	Apprv'd
0	2019/01/15	For Issue	HM	NS	NS	SH

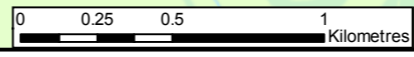


Client  
Esso Petroleum Company, Limited  
Ermyn House,  
Ermyn Way,  
Leatherhead,  
Surrey,  
KT22 8UX



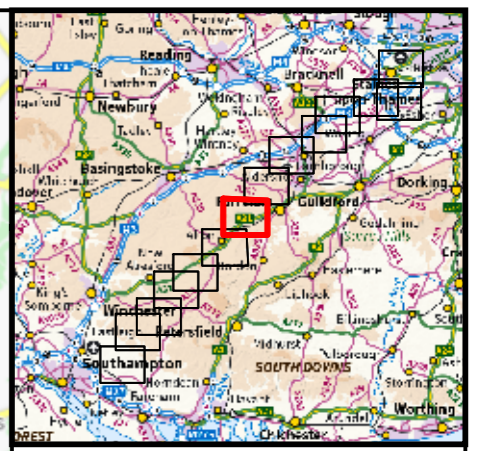
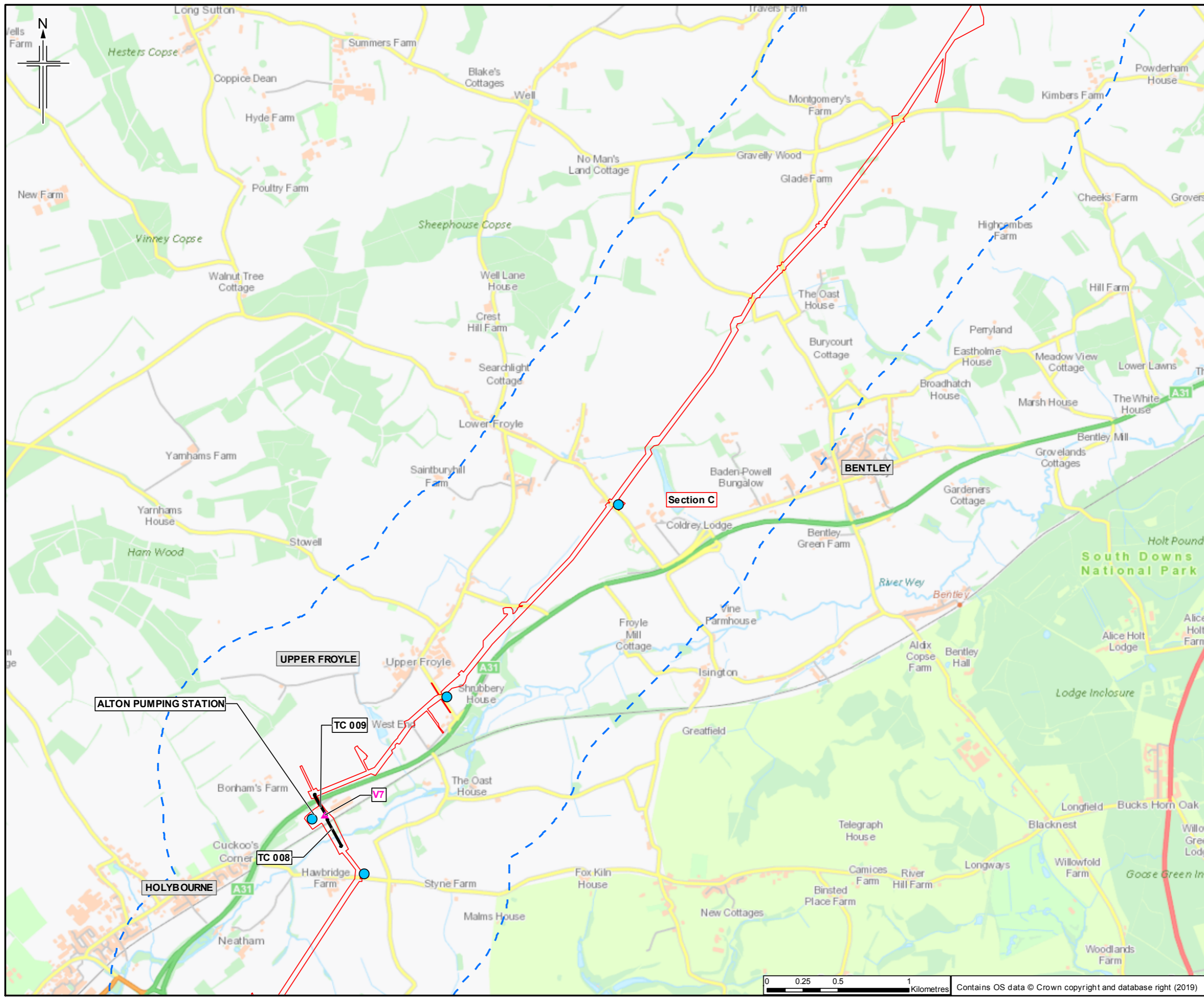
Drawing title  
**ENVIRONMENTAL STATEMENT  
LAYOUT OF SCHEME  
APFP Reg. (2009) 5(2)(o)**

Drawing Status	For Issue
Scale	1:25,000 @ A3 DO NOT SCALE
Jacobs No.	B2325300
Project/Draw No.	B2325300-JAC-000-ENV-DRG-001002
Drawing number	Figure 3.1 Sheet 6 of 14
Rev	0



Contains OS data © Crown copyright and database right (2019)





- Legend**
- Order Limits
  - Order Limits 1km buffer
  - Section break
  - Section break
  - Logistic hub
  - Construction compound
  - ▲ Valves V14
  - Trenchless crossing TC 008
  - Cathodic Protection

Sheet displays part of Section C

Rev.	Rev. Date	Purpose of revision	OrigDwn	Checked	Rev'd	Apprv'd
0	20/05/2019	For Issue	HM	NS	NS	SH

Author: **JACOBS**  
 1180 East Hill Road, Wokingham, Wokingham, RG40 3DU, UK  
 Tel: +44 (0) 1344 770000 Fax: +44(0)1344 740701  
 www.jacobs.com

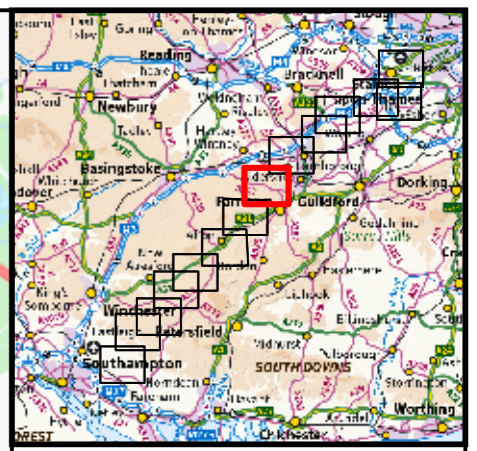
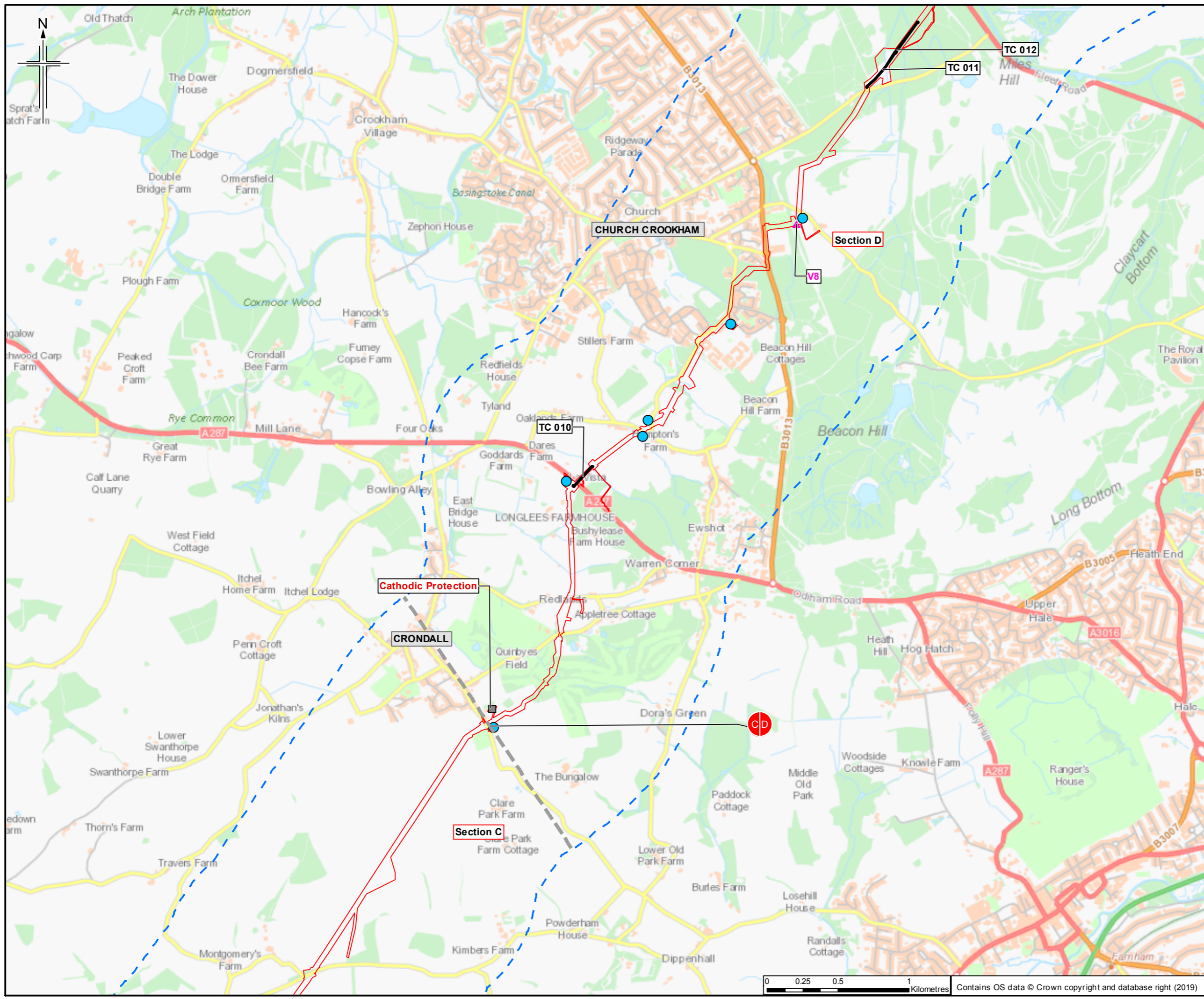
Client:  
 Esso Petroleum Company, Limited  
 Ermyn House,  
 Ermyn Way,  
 Leatherhead,  
 Surrey,  
 KT22 8UX

Project:  
 Southamton to London Pipeline Project

Drawing title:  
**ENVIRONMENTAL STATEMENT  
 LAYOUT OF SCHEME  
 APFP Reg. (2009) 5(2)(o)**

Drawing Status	For Issue	
Scale	1:25,000 @ A3	DO NOT SCALE
Jacobs No.	B2325300	
ProjectWise No.	B2325300-JAC-000-ENV-DRG-001002	
Drawing number	Figure 3.1 Sheet 7 of 14	Rev 0





- Legend**
- Order Limits
  - Order Limits 1km buffer
  - Section break
  - Section break
  - Logistic hub
  - Construction compound
  - ▲ Valves V14
  - Trenchless crossing TC 008
  - Cathodic Protection

Sheet displays parts of Section C and Section D

Rev.	Rev. Date	Purpose of revision	Orig'Dwn	Checked	Rev'd	Apprv'd
0	20/05/2019	For Issue	HM	NS	NS	SH



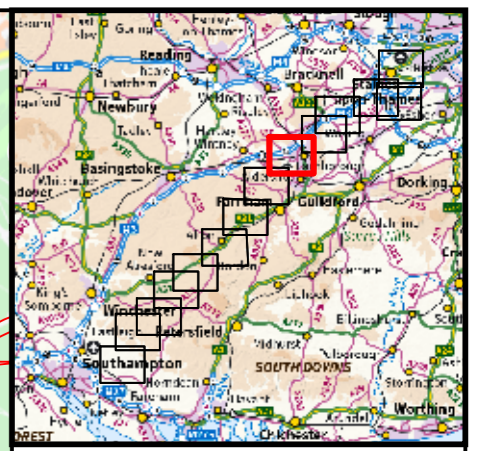
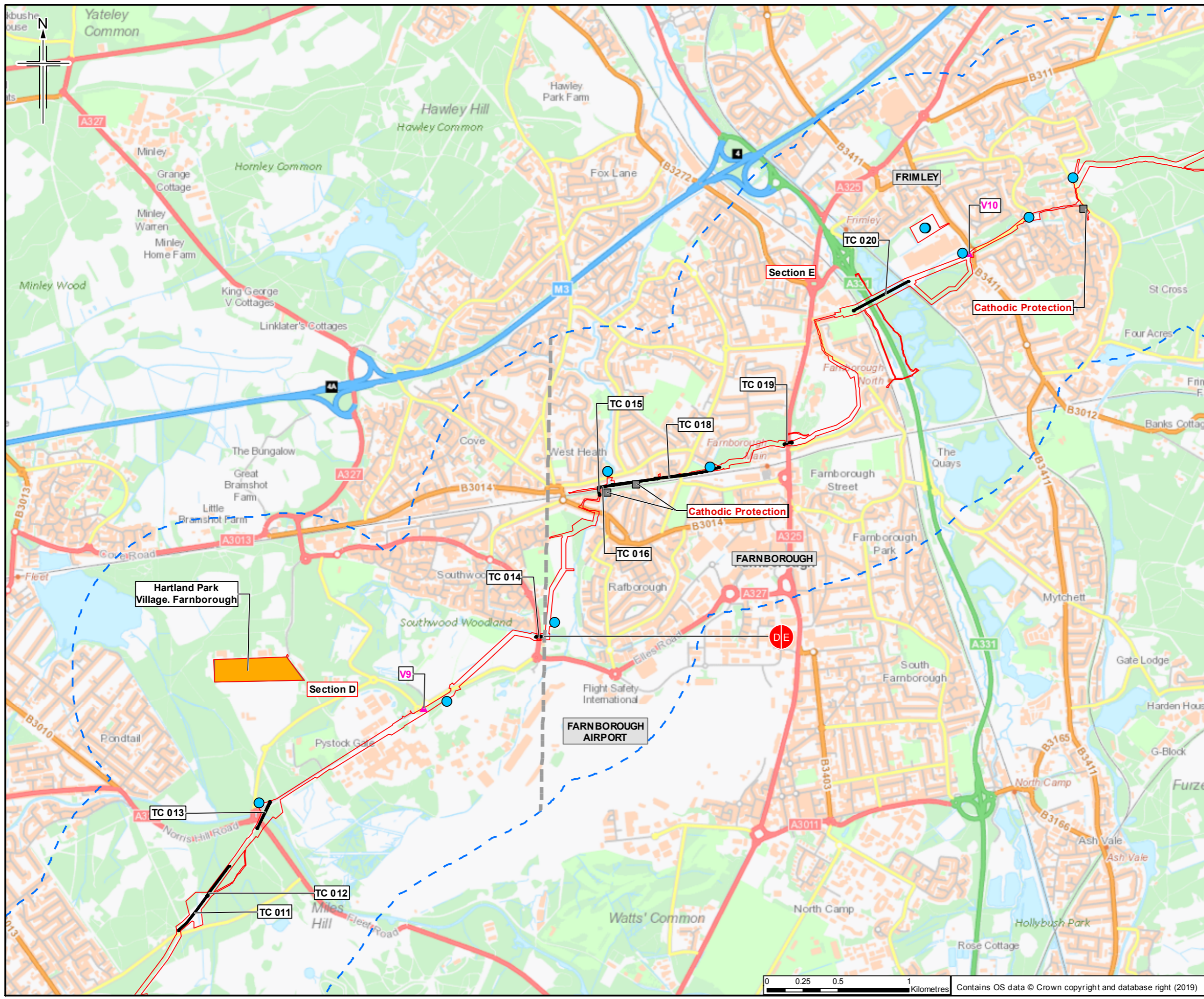
Client  
Esso Petroleum Company, Limited  
Ermyn House,  
Ermyn Way,  
Leatherhead,  
Surrey,  
KT22 8UX



Drawing title  
**ENVIRONMENTAL STATEMENT  
LAYOUT OF SCHEME  
APFP Reg. (2009) 5(2)(o)**

Drawing Status	For Issue
Scale	1:25,000 @ A3 DO NOT SCALE
JACOBS No.	B2325300
ProjectWise No.	B2325300-JAC-000-ENV-DRG-001002
Drawing number	Figure 3.1 Sheet 8 of 14
	Rev 0





- Legend**
- Order Limits
  - Order Limits 1km buffer
  - Section break
  - Section break
  - Logistic hub
  - Construction compound
  - ▲ Valves V14
  - Trenchless crossing TC 008
  - Cathodic Protection

Sheet displays parts of Section D and Section E

Rev.	Rev. Date	Purpose of revision	Orig/Dwn	Checked	Rev'd	Apprv'd
0	20/05/2019	For Issue	HM	NS	NS	SH



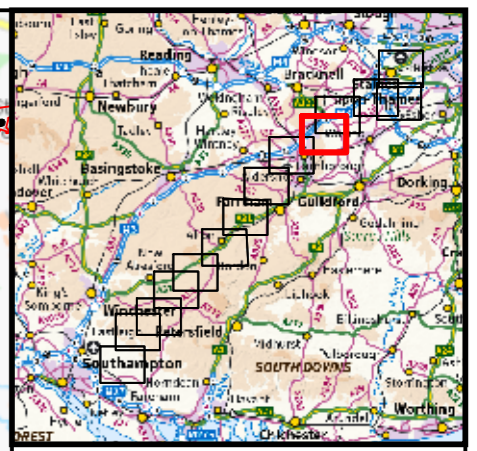
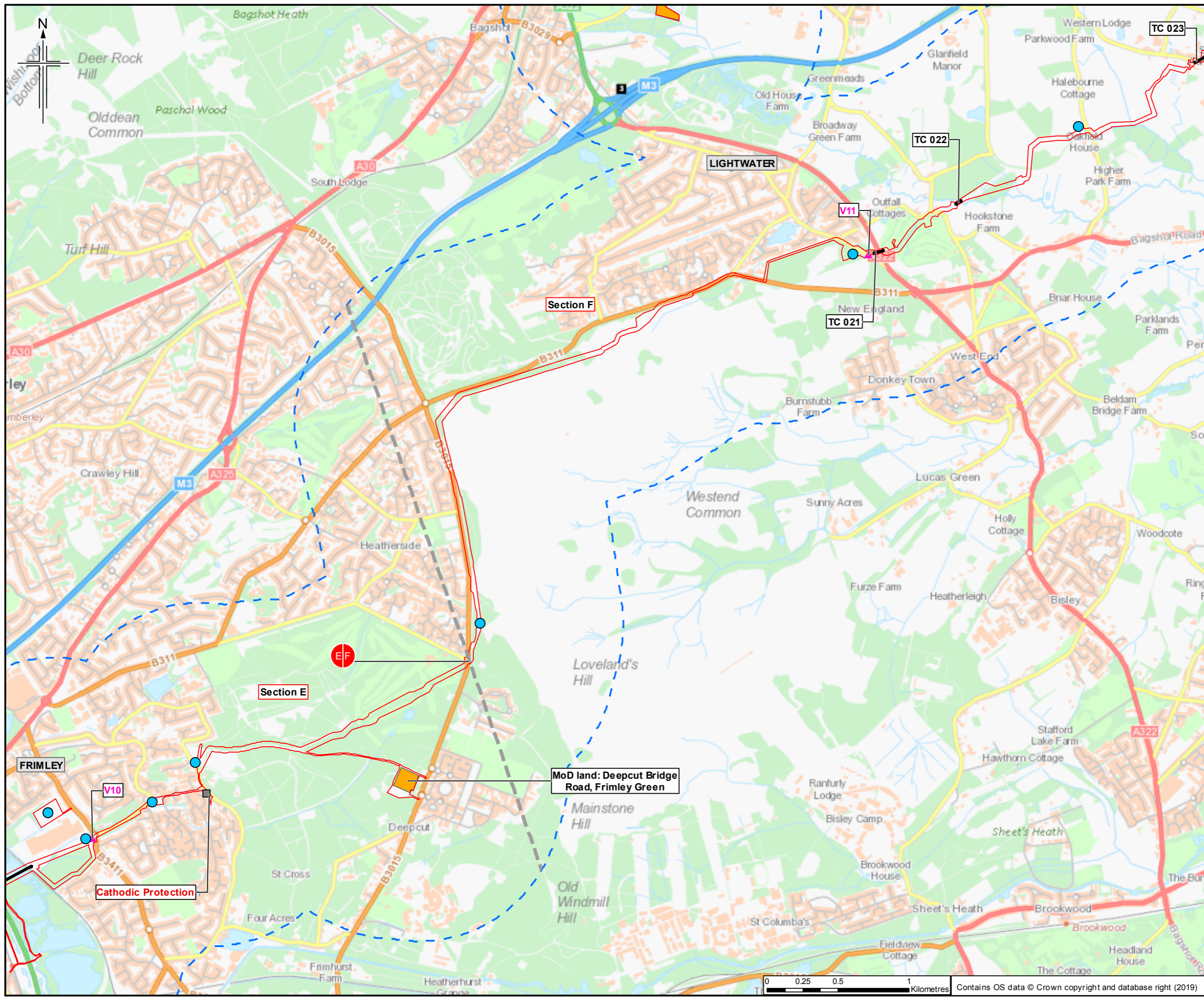
Client  
Esso Petroleum Company, Limited  
Ermyn House,  
Ermyn Way,  
Leatherhead,  
Surrey,  
KT22 8UX



Drawing title  
**ENVIRONMENTAL STATEMENT  
LAYOUT OF SCHEME  
APFP Reg. (2009) 5(2)(o)**

Drawing Status	For Issue
Scale	1:25,000 @ A3 DO NOT SCALE
Jacobs No.	B2325300
ProjectWise No.	B2325300-JAC-000-ENV-DRG-001002
Drawing number	Figure 3.1 Sheet 9 of 14
Rev	0





- Legend**
- Order Limits
  - Order Limits 1km buffer
  - Section break
  - Section break
  - Logistic hub
  - Construction compound
  - ▲ Valves V14
  - Trenchless crossing TC 008
  - Cathodic Protection

Sheet displays parts of Section E and Section F

Rev.	Rev. Date	Purpose of revision	OrigDwn	Checked	Rev'd	Apprv'd
0	20/05/2019	For Issue	HM	NS	NS	SH



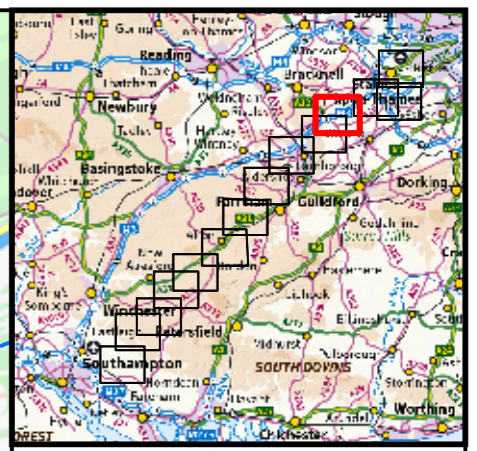
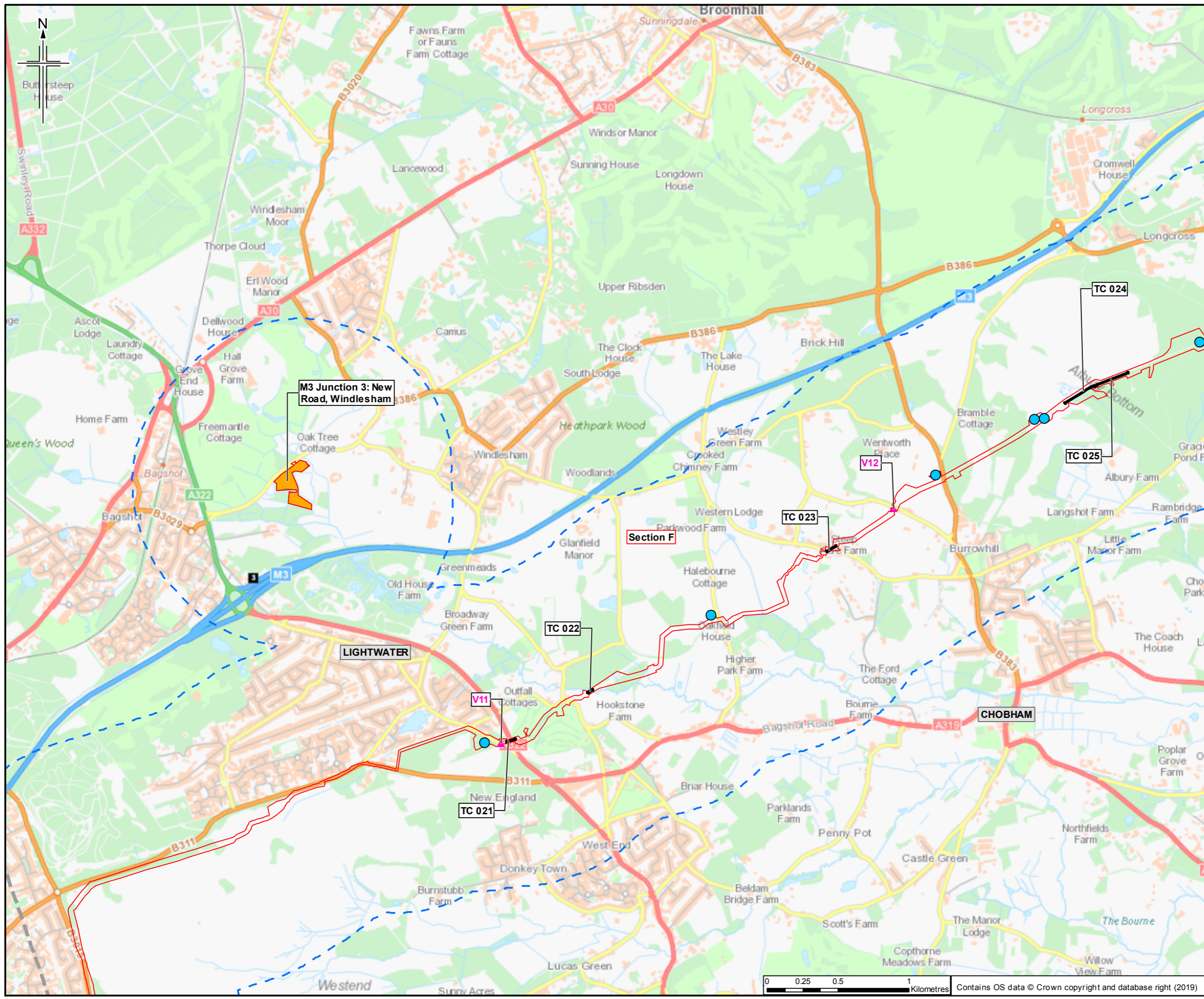
Client  
Esso Petroleum Company, Limited  
Ermyn House,  
Ermyn Way,  
Leatherhead,  
Surrey,  
KT22 8UX



Drawing title  
**ENVIRONMENTAL STATEMENT  
LAYOUT OF SCHEME  
APFP Reg. (2009) 5(2)(o)**

Drawing Status	For Issue
Scale	1:25,000 @ A3 DO NOT SCALE
JACOBS No.	B2325300
ProjectWise No.	B2325300-JAC-000-ENV-DRG-001002
Drawing number	Figure 3.1 Sheet 10 of 14
Rev	0





- Legend**
- Order Limits
  - Order Limits 1km buffer
  - Section break
  - Section break
  - Logistic hub
  - Construction compound
  - ▲ Valves V14
  - Trenchless crossing TC 008
  - Cathodic Protection

Sheet displays part of Section F

Rev.	Rev. Date	Purpose of revision	Orig/Dwn	Checked	Rev'd	Apprv'd
0	20/05/2019	For Issue	HM	NS	NS	SH

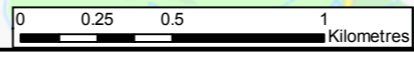


Client  
Esso Petroleum Company, Limited  
Ermyn House,  
Ermyn Way,  
Leatherhead,  
Surrey,  
KT22 8UX



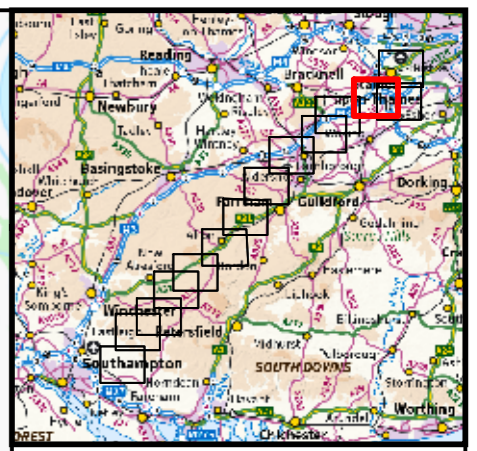
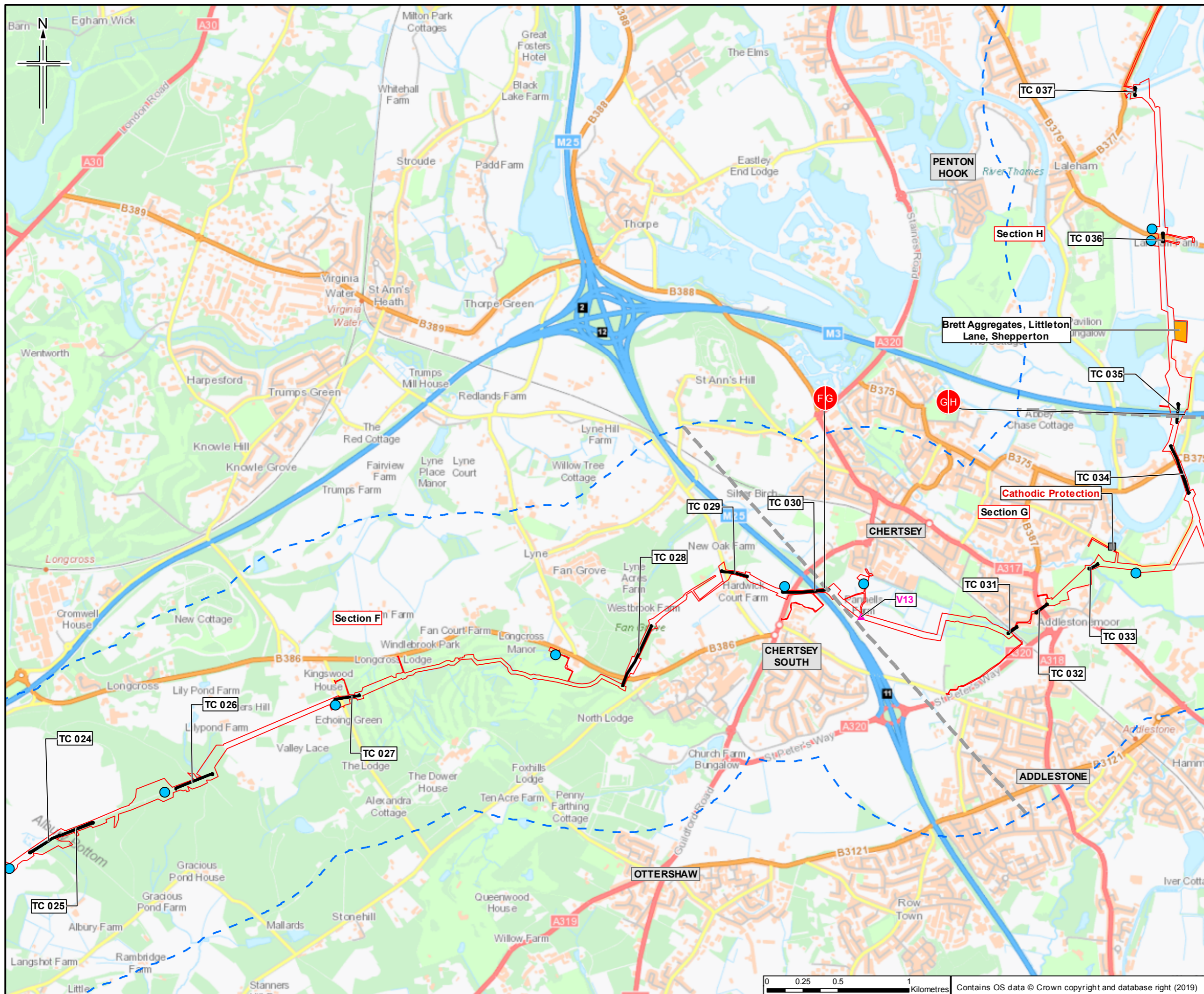
Drawing title  
**ENVIRONMENTAL STATEMENT  
LAYOUT OF SCHEME  
APFP Reg. (2009) 5(2)(o)**

Drawing Status	For Issue
Scale	1:25,000 @ A3 DO NOT SCALE
Jacobs No.	B2325300
ProjectWise No.	B2325300-JAC-000-ENV-DRG-001002
Drawing number	Figure 3.1 Sheet 11 of 14
Rev	0



Contains OS data © Crown copyright and database right (2019)





- Legend**
- Order Limits
  - Order Limits 1km buffer
  - Section break
  - Section break
  - Logistic hub
  - Construction compound
  - ▲ Valves V14
  - Trenchless crossing TC 008
  - Cathodic Protection

Sheet displays parts of Section F, Section G and Section H

Rev.	Rev. Date	Purpose of revision	OrigDwn	Checked	Rev'd	Apprv'd
0	20/05/2019	For Issue	HM	NS	NS	SH



Client  
Esso Petroleum Company, Limited  
Ermyn House,  
Ermyn Way,  
Leatherhead,  
Surrey,  
KT22 8UX



Drawing title  
**ENVIRONMENTAL STATEMENT  
LAYOUT OF SCHEME  
APFP Reg. (2009) 5(2)(o)**

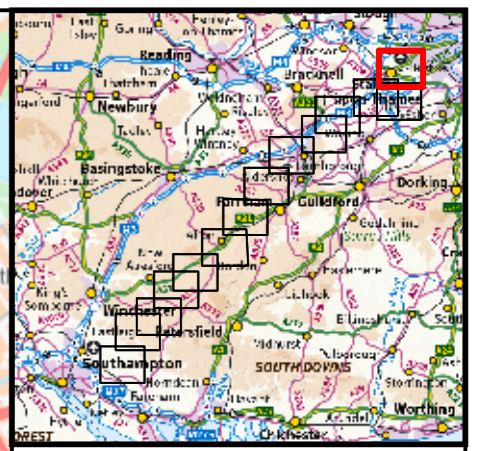
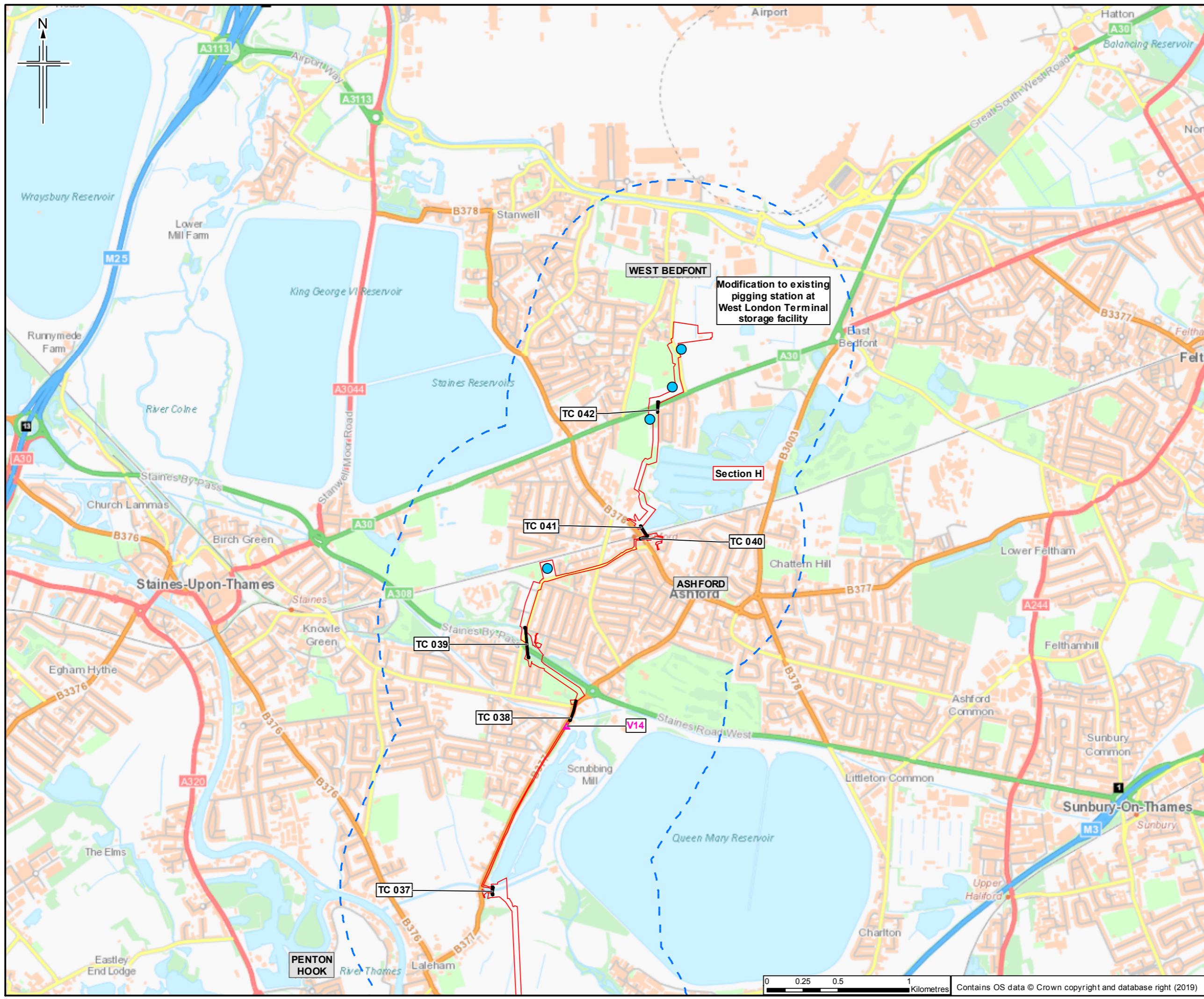
Drawing Status	For Issue
Scale	1:25,000 @ A3 DO NOT SCALE
Jacobs No.	B2325300
Project Wise No.	B2325300-JAC-000-ENV-DRG-001002
Drawing number	Figure 3.1 Sheet 12 of 14
Rev	0

This drawing is not to be used in whole or part other than for the intended purpose and project as defined on this drawing. Refer to the contract for full terms and conditions.









- Legend**
- Order Limits
  - Order Limits 1km buffer
  - Section break
  - Section break
  - Logistic hub
  - Construction compound
  - ▲ Valves V14
  - Trenchless crossing TC 008
  - Cathodic Protection

Sheet displays part of Section H

Rev.	Rev. Date	Purpose of revision	Orig'Dwn	Checked	Rev'd	Apprv'd
0	20/05/2019	For Issue	HM	NS	NS	SH

Author

**JACOBS**  
 1180 Epsom Road, Wokingham, Wokingham RG40 3DU, UK  
 Tel: +44 (0)135 945 7000 Fax: +44(0)135 945 7001  
 www.jacobs.com

Client  
 Esso Petroleum Company, Limited  
 Ermyn House,  
 Ermyn Way,  
 Leatherhead,  
 Surrey,  
 KT22 8UX

Project

Southampton to London Pipeline Project

Drawing title

**ENVIRONMENTAL STATEMENT  
 LAYOUT OF SCHEME  
 APPF Reg. (2009) 5(2)(o)**

Drawing Status	For Issue
Scale	1:25,000 @ A3 DO NOT SCALE
Jacobs No.	B 232 5300
ProjectWise No.	B 232 5300-JAC-000-ENV-DRG-001002
Drawing number	Figure 3.1 Sheet 14 of 14
	Rev 0

This drawing is not to be used in whole or part other than for the intended purpose and project as defined on this drawing. Refer to the contract for full terms and conditions.



(This page is intentionally left blank)